

# QUINTESSSENCE THEATRE



# THE TRANSFORMATION REPERTORY

NATIONAL  
ENDOWMENT for the **ARTS**  
arts.gov

WILLIAM SHAKESPEARE'S

**THE WINTER'S TALE**

BEN JONSON'S

**THE ALCHEMIST**

MARCH 16 - APRIL 17 2022

THE WINTER'S TALE IS PART OF **SHAKESPEARE IN AMERICAN COMMUNITIES**, A PROGRAM OF THE NATIONAL ENDOWMENT FOR THE ARTS IN PARTNERSHIP WITH ARTS MIDWEST.

# THE WINTER'S TALE

DIRECTED BY **ALEXANDER BURNS**

## ENSEMBLE

CLOWN/ FIRST LORD

**LEE THOMAS CORTOPASSI**

PAULINA/ DORCAS

**ELENI DELOPOULOS**

PERDITA/ LADY 2

**KRISTIN DEVINE JONES**

EMILIA/ MOPSA/ LADY

**HANNA GAFFNEY**

POLIXENES

**AMARI INGRAM \***

FLORIZEL/ SECOND LORD

**TRAVOYE JOYNER**

ANTIOGONUS/ SHEPARD

**JOSEPH LANGHAM \***

AUTOLYCUS/ OFFICER/ ARCHIDAMUS

**JERED MCLENIGAN \***

HERMIONE/ TIME

**HILLARY PARKER \***

MAMILLIUS

**ROBBIE WITTY**

CAMILLO/ MARINER

**JOHN ZAK \***

LEONTES

**MICHAEL ZLABINGER \***



## CREATIVE

SET & SOUND DESIGNER **ALEXANDER BURNS** LIGHTING DESIGNER **ELLEN MOORE**

COSTUME DESIGNER **JANE CASANAVE**

ORIGINAL MUSIC **LIZ FILIOS \***, **JERED MCLENIGAN \*** & **JOSEPH LANGHAM \***

COSTUME ASSISTANT **CHRIS LIONE** BEAR PUPPET **CURTIS COYOTE** CROWN MAKERS **BARBARIC YAWP WORKSHOP**

PRODUCTION SPONSORS: **NEA & JOAN I. COALE**

THE WILL BE ONE 10 MINUTE INTERMISSION

\*Member of Actors' Equity Association

# A LITTLE BIT OF PLOT

## THE WINTER'S TALE

**LEONTES**, King of Sicily, becomes jealous because he believes that his queen **HERMIONE** has fallen in love with his best friend **POLIXENES**, King of Bohemia. When Leontes asks **CAMILLO** to poison Polixenes, Camillo tells Polixenes everything and they escape to Bohemia. Their escape only fuels Leontes' irrational decisions—separating Hermione from their son **MAMILLIUS**, accusing Hermoine of carrying Polixenes' unborn child, and eventually locking Hermione in prison. To find out the truth, Leontes consults the Delphic oracle at Apollo's temple.

After Hermione gives birth to a baby girl in prison, **PAULINA** petitions Leontes for Hermione's release. But Leontes orders **ANTIGONUS**, Paulina's husband, to abandon the baby outside of the kingdom. Hermione proclaims her innocence and the oracle confirms that Leontes' jealousy is unfounded saying "the king shall live without an heir, if that which is lost be not found."

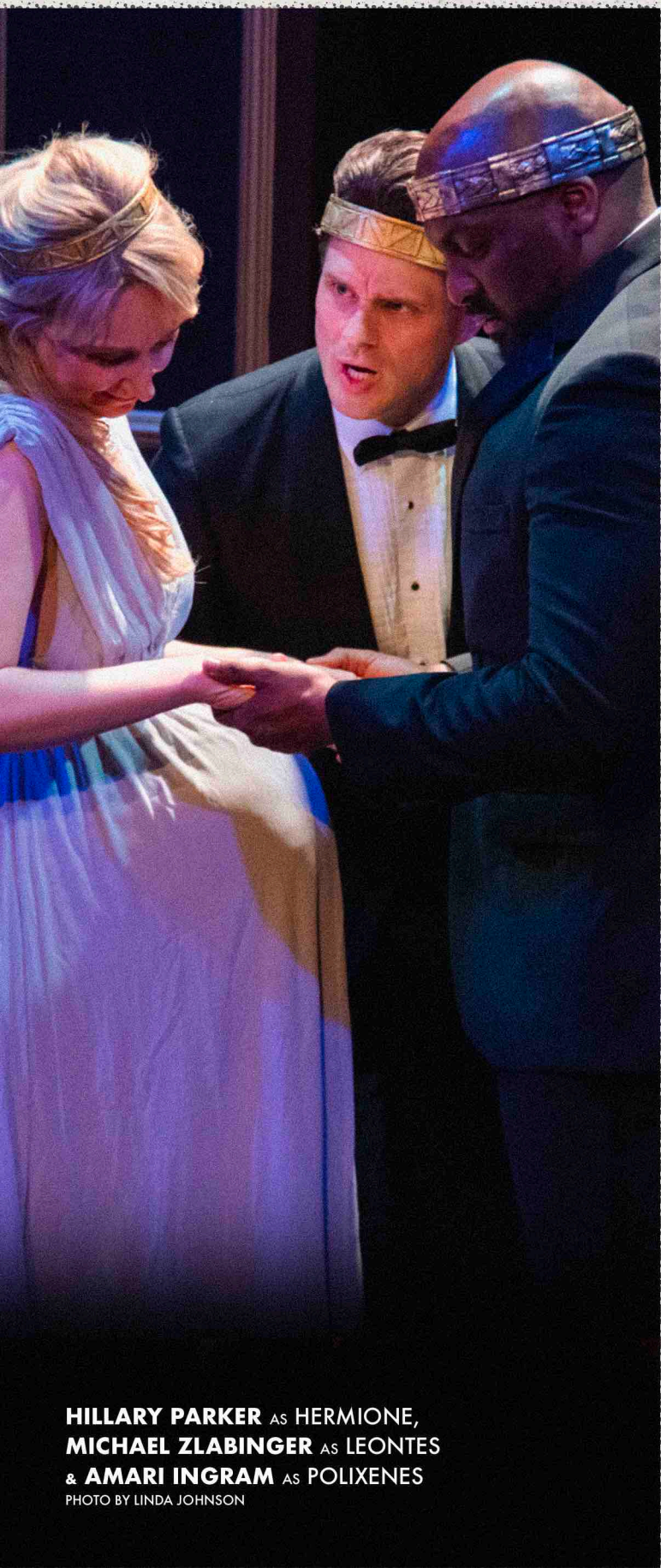
Hermione faints when she learns of Mamillius' death, and, soon after, Paulina brings word that Hermione has died of grief. Antigonus brings the baby girl, **PERDITA**, to Bohemia, and after some remarkable acts of fate, the lost princess ends up with a family of shepherds and 17 years pass.

Who gets eaten by a bear? What will happen when Perdita falls in love with Polixenes' son **FLORIZEL**? How can Leontes ever make up for his mistakes?



# WILLIAM SHAKESPEARE

## BIO



In a flamboyant age and a notoriously flamboyant profession—he was an active member of a theatre company for at least 20 years—Shakespeare was abnormally reticent. As a result, researchers have had painstakingly to piece together the story of his life from surviving scraps of evidence.

In 1564, Shakespeare was born in the market town of Stratford-upon-Avon, Warwickshire, where his father was a prosperous glover and one of the town's 14 principal burgesses. In 1565, John Shakespeare was promoted to the rank of alderman, and he became Chief Alderman in 1571. It is a reasonable assumption that such a man would send his son to the local grammar school, though there is speculation that the boy did not complete his course there, owing to the decline of his father's fortunes after 1576. The years before Shakespeare's marriage to Anne Hathaway in 1582 are blank. Within six months of the wedding, the couple had a daughter. She was the Susanna who later married John Hall, a local physician, and lived prosperously in Stratford. The family was completed with the birth of twins, Judith and Hamnet, in 1585. Hamnet died in 1596 and was buried in Stratford, where Judith remained until her death in 1662.

Virtually nothing is known of Shakespeare's life from 1585 to 1592. It may be that he left home and family to tour with a group of London players. We do not know how Shakespeare came by the money to purchase a share in the newly formed Lord Chamberlain's Men in 1594. Living close to Bishopsgate and the Globe Theatre, Shakespeare continued to write plays at the rate of approximately two per year. Shakespeare wrote most of his greatest plays during the first decade (1599-1608) of his company's occupation of the Globe. It was a period that saw the Lord Chamberlain's Men honored by the new monarch [James I] with the title of King's Men and confirmed their ascendancy at court.

**HILARY PARKER** AS HERMIONE,  
**MICHAEL ZLABINGER** AS LEONTES  
& **AMARI INGRAM** AS POLIXENES  
PHOTO BY LINDA JOHNSON

# WILLIAM SHAKESPEARE

## BIO



By 1602, Shakespeare had moved his London lodgings to Southwark, in closer proximity to the new theatre, and maintained his financial interests in Stratford. He may have feared the continuing insecurity of his profession, threatened by authority, by the regular outbreaks of plague, and by the faddish interest in boy actors. Facile younger dramatists, Beaumont and Fletcher in particular, were challenging his supremacy by the readiness of their response to Jacobean taste for sensation and spectacle. It was a taste easily satisfied in the indoor Blackfriars, which the King's Men added to the outdoor Globe in 1608. Shakespeare's last plays, *Pericles, Prince of Tyre* (on which he collaborated, probably with George Wilkins), *Cymbeline*, *The Winter's Tale*, and *The Tempest*, take account of the revived interest in romance, magic, and improbable resolutions whilst giving scope to a new 'indoor' fondness for scenic spectacle. By 1613, when the Globe was destroyed by fire, his hold on the London theatre was slipping. He had just purchased the upper floor of one of the Blackfriars gatehouses and may not have wished to contribute more to the rebuilding of the Globe. It is possible, though not certain, that he relinquished his share in the old theatre, now under reconstruction, and spent his last years in Stratford.

– DANIEL J. WATERMEIER,  
EMERITUS PROFESSOR OF THEATRE,  
UNIVERSITY OF TOLEDO

# THE ALCHEMIST

DIRECTED BY **PAUL HEBRON**

## ENSEMBLE

KASTRIL

**LEE THOMAS CORTOPASSI**

DAPPER

**ELENI DELOPOULOS**

DAME PLIANT/ NEIGHBOR

**KRISTIN DEVINE JONES**

DOL COMMON

**HANNA GAFFNEY**

ABEL DRUGGER/ NEIGHBOR

**AMARI INGRAM\***

ANANIAS

**TRAVOYE JOYNER**

SIR EPICURE MAMMON

**JOSEPH LANGHAM\***

SUBTLE

**JERED MCLENIGAN\***

SURLY

**HILLARY PARKER\***

FACE

**JOHN ZAK\***

TRIBULATION/ LOVEWIT

**MICHAEL ZLABINGER\***



## CREATIVE

SET DESIGN **ALEXANDER BURNS** LIGHTING DESIGNER **ELLEN MOORE**

COSTUME DESIGNER **SUMMER LEE JACK**

ORIGINAL MUSIC **DAVID COPE**

PROPS MASTER **SHANNON KEARNS** DIALECT COACH **LEAH GABRIEL**

COSTUME ASSISTANT **ANNA SORRENTINO**

THE WILL BE ONE 10 MINUTE INTERMISSION

\*Member of Actors' Equity Association

# A LITTLE BIT OF PLOT

## THE ALCHEMIST

To avoid the outbreak of plague in London, a gentleman **LOVEWIT** flees to the countryside leaving his butler, **JEREMY**, in charge of his house. In Lovewit's absence, Jeremy takes on the role of Captain **FACE**, and plots with a conman **SUBTLE** and a prostitute **DOL COMMON** to swindle a variety of visitors with different schemes. For several of the dupes, Subtle pretends to be a master of alchemy, the medieval practice that, among other things, could turn metal into gold.

The clerk **DAPPER** asks for Subtle's skills at necromancy to conjure a spirit that will help him win at gambling. The tobacconist **ABEL DRUGGER** wants assurances about opening his new shop. **SIR EPICURE MAMMON** wants Subtle to make him the philosopher's stone, a magical item that will bring wealth and love. A sect of Anabaptist Puritans led by **TRIBULATION WHOLESOME** and **ANANIAS** asks for wealth and success for their congregation. Only **PERTINAX SURLY** recognizes Face, Subtle, and Dol Common for the tricksters they are.

When a rich young widow, **DAME PLIANT**, and her rambunctious brother **KASRTIL** arrive in London, how long can the three servants continue to juggle so many schemes without losing control of their pawns or stabbing each other in the back? Can Surly outwit the trio by pretending to be a Spanish Don? What will happen when Lovewit returns to find his house full of unearned riches? And who will win the hand of the wealthy widow?

**DON'T FORGET TO PICK UP  
YOUR COMPLEMENTARY SELECTED GLOSSARY OF TERMS  
IN THE FRONT LOBBY.**



# BEN JONSON

## BIO

We do not know how, nor precisely when, Jonson entered the acting profession. Entries in Henslowe's *Diary* confirm that he was employed as both actor and writer in 1597, the year in which the *Isle of Dogs* furore threatened the whole future of London's theatres. The already controversial Jonson was probably co-author (with Thomas Nashe) of this lost play, whose vigorous satire provoked action against the public theatres and probably led to the imprisonment of Jonson and several of his fellow actors. Never a man to tread warily, Jonson was again in trouble in 1598, when he was arrested for killing another actor, Gabriel Spencer, in a duel. He escaped execution by pleading benefit of clergy.

The combative independence that was a leading characteristic was already unmistakable.

In 1605, he began a long association with the Stuart court by collaborating with the designer, Inigo Jones, on *The Masque of Blackness*. Jonson's masques are far more numerous than his plays, and they contain some of his loveliest poetry. For *The Masque of Queens* (1609) he introduced the discordant anti-masque, which remained an exuberantly grotesque feature of his subsequent work in the genre. Increasingly disenchanted by the displacement of his poetry by the ingeniously spectacular scenery of Jones, Jonson complained and quarrelled and finally abandoned masque-writing in 1634.

The plays on which Jonson's enduring reputation is based are all comedies and all written in the ten years from 1605 to 14. They are *Volpone* (1605), *Epicoene: or, The Silent Women* (1609), *The Alchemist* (1610), and *Batholomew Fair* (1614). It is here that Jonson's stagecraft is at its most brilliant.

The incidents and episodes are artfully controlled and yet preserve an air of improvisatory spontaneity. The characters, though strictly defined by their names, seem able to command the freedom of the stage. The cutting edge of Jonson's comedies is sharp. They are peopled with deceivers and dupes, and the virtuous intelligent have an unusually small part to play. The 'image of the times', promised in the Prologue to the revised *Every Man in His Humour* (1616), is an uncomfortable one. It is an age of usury in which human folly gives living room to moral outrage.

His stubborn belief in his own superior talent is represented by the unprecedented publication, in folio, of his dramatic and poetic *Works* (1616) and by his continuing provision of masques for the Stuart court. Jonson's profound knowledge of London life was rewarded by his appointment as City Chronologer in 1628, the year in which he suffered a severe stroke. Many of the friends who remained loyal to him during his difficult last years attended his funeral in Westminster Abbey and contributed to the collection of memorial elegies *Jonsons Virbius* (1638). One of them, the forgotten Jack Young, inscribed the words 'O rare Ben Jonson' on his gravestone.

– PETER THOMSON,  
EMERITUS PROFESSOR OF DRAMA,  
UNIVERSITY OF EXETER





# THE ENSEMBLE



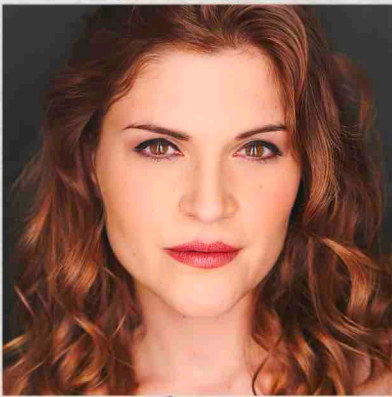
LEE THOMAS CORTOPASSI



ELENI DELOPOULOS



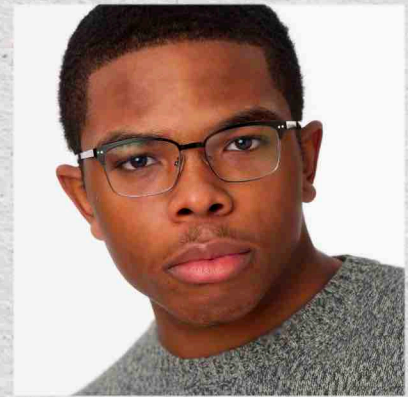
KRISTIN DEVINE



HANNA GAFFNEY



AMARI INGRAM\*



TRAVOYE JOYNER



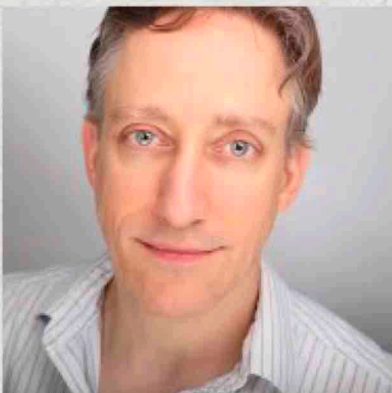
JOSEPH LANGHAM\*



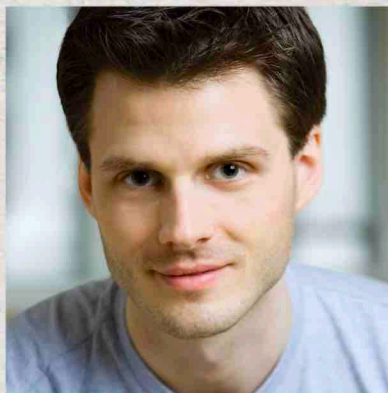
JERED MCLENIGAN\*



HILLARY PARKER\*



JOHN ZAK\*



MICHAEL ZLABINGER\*

THE PERFORMANCE OF ELENI DELOPOULOS IS UNDERWRITTEN IN PART BY SANDY CADWALADER.

THE PERFORMANCE OF JERED MCLENIGAN\* IS UNDERWRITTEN IN PART BY MARION MILLER.

THE PERFORMANCE OF HILLARY PARKER\* IS UNDERWRITTEN IN PART BY PATRICIA STRANAHAN & ED RHOADS.

THE PERFORMANCE OF MICHAEL ZLABINGER\* IS UNDERWRITTEN IN PART BY JANET & JAMES AVERILL.

\*Member of Actors' Equity Association

# THE TRANSFORMATION REPERTORY

## PRODUCTION TEAM

PRODUCTION STAGE MANAGER MAGGIE DAVIS\*

CHOREOGRAPHER ADRIENNE MAITLAND

FIGHT DIRECTION ALEX CORDARO

ASSISTANT STAGE MANAGER CAT BRENNAN

RUN CREW CJ COOLSEN

RUN CREW VICTORIANA DAN

WARDROBE SUPERVISOR KAYLEIGH GUMBRECHT

COVID COMPLIANCE OFFICER EMILY CROSS

MASTER ELECTRICIAN EVAN MCELHINEY

ELECTRICIANS MATT BERTUCCI, CAROLINE MEDEIRA,  
BROOKLYNN SMITH, ROW WALTERS

PROGRAM BY LEE THOMAS CORTOPASSI



*Clover*  
Montessori School

A Montessori pre-school, in the heart of  
Mt. Airy, celebrating early childhood in an  
equitable, inclusive community.

[www.clovermontessorischool.org](http://www.clovermontessorischool.org)

# UPCOMING EDUCATION

## QUINTESSENCE

### **"LEND ME YOUR EARS" — PUBLIC SPEAKING AND SHAKESPEARE**

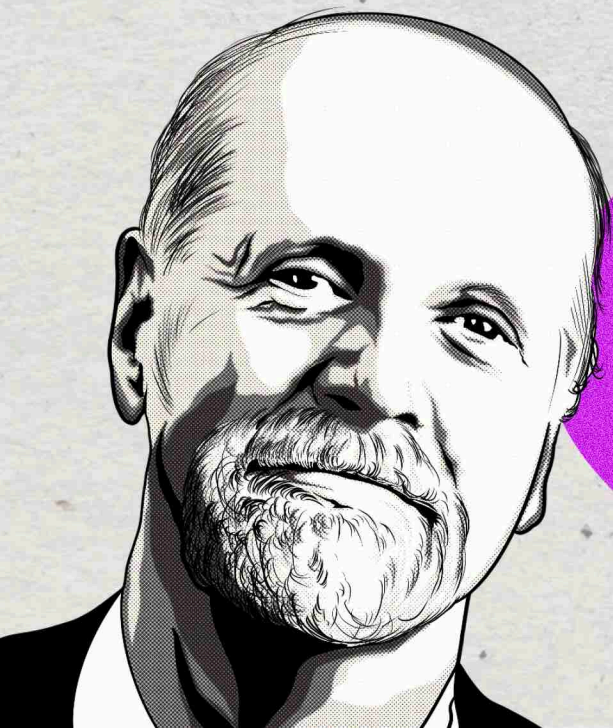
Mark Antony, Portia, and Henry V are only three of the many Shakespearean characters that convince and move their crowds – both within the play, and for audiences that watch them. In this public speaking course, students will learn the techniques that actors and directors use in production to foster relaxation and build confidence. We will learn to explore the use of voice and intention, as well as develop and strengthen the rhetorical skills so important for effective persuasion. If every speech is an opportunity to share your perspective, then discover how a better understanding of the actor's craft and Shakespeare's persuasive arguments can improve your presentation and networking skills.

**PAUL HEBRON | MONDAY NIGHTS 7PM - 9PM | APRIL 4 - APRIL 25**

### **"PEARL CLEAGE AND THE THEATRICAL TRADITIONS OF AFRICAN AMERICAN WOMEN PLAYWRIGHTS"**

The enduring contributions that Black female playwrights have made to the American theater tradition cannot be overstated, from the structural symmetry of Lorraine Hansberry to the "choreo-poem" aesthetics of Ntozake Shange. This play-reading class will provide a brief overview of these contributions, focusing particularly on plays of the 20th century and their impact on the artistic, thematic, and political explorations of contemporary African American theater-makers. This course culminates in a class response to QTG's production of Pearl Cleage's *Flyin' West*.

**QUINN D. ELI | MONDAY NIGHTS 7PM - 9PM | MAY 2 - MAY 23**



## **THE QUINTESSENCE SUMMER CAMP** **MONDAYS THROUGH FRIDAYS 9AM - 3PM**

**JULY 18 - 22 — AGES 8 - 12**  
A. A. MILNE'S **WINNIE - THE - POOH**

**JULY 25 - 29 — AGES 13 - 17**  
WILLIAM SHAKESPEARE'S **TWELFTH NIGHT**

# CAST & CREATIVE BIOS

## TRANSFORMATION REP

### **LEE THOMAS CORTOPASSI** | CLOWN/ FIRST LORD; KASTRIL

Lee is actor, director, writer & visual artist, currently serving as Creative Manager for Quintessence. Lee was last seen at Q in *Little Women* as John Brooke. Lee has appeared in over a dozen Quintessence productions. Favorite roles include Henry Antrobus in *The Skin of Our Teeth*, Moe Axelrod in *Awake & Sing*, King Ferdinand in *Love's Labor's Lost* & Henry Bolingbroke in *Richard II*. Lee was the writer/ director for Quintessence's production of *Aesop's Fables* as well as director of Season X's *The Wizard of Oz*. Most recently, Lee served as producer for Thornton Wilder's *The Seven Deadly Sins* audio play series for which he directed *The Wreck on the 5:25*. Lee has worked Off-Broadway, and at various theaters in NYC and the East Coast. His play, *The Big: A Farce Noir*, played at The PIT, NYC and for a limited run at The Sedgwick. Lee is a proud graduate of The William Esper 2-year Acting Conservatory. Thanks to Alex & Paul for the opportunities. Love to R & D.

### **ELENI DELOPOULOS** | PAULINA/ DORCAS; DAPPER

Eleni was last on stage here as Aunt March in *Little Women* and Widow Corney in *Oliver!* and is thrilled to return to Quintessence! Most recently: *The Ever Present* by R Eric Thomas at Theater Exile. Philly Theater: *Cafe Puttanesca* at Act 11, 3 Barrymore Nominations for *Monster in the Hall* and *Radiant Vermin Inis Nua, Much Ado (Beatrice) / Othello (Emilia)* Philadelphia Shakespeare Theater, *Christmas Carol D.T.C.* Selected Credits: Off-Broadway; *A Stoop on Orchard Street*. Tours: *Hair* in Italy, *Mame USA*. Regional: *Rona Spelling Bee* (Alabama Shakespeare Theater), *Annie* (Fulton Theater), *Urinetown* (Carousel), *Speed in Two Gentlemen of Verona* (Shakespeare & Company). She also is a costume designer & runs an educational non-profit. Thanks to her hearts - Ehren & Peter, the cast and crew, Maggie, and to Alex and Paul for this wonderful opportunity. PERFORMANCE UNDERWRITTEN IN PART BY SANDY CADWALADER.

### **KRISTIN DEVINE JONES** | PERDITA/ LADY 2; DAME PLIANT/ NEIGHBOR

QTG: *Love's Labor's Lost* (Maria), *Broken Heart* (Euphrania), *My Fair Lady*, and *Oliver!* (Charlotte); Readings/Concerts: *Well of Saints* (Mary Byrne), *Witch of Edmonton*, *Miscast Cabaret*. PHILLY: *Grey Gardens* (Little Edie) with 11th Hour, *A Kinetic Tree*, *Chrystal Palace* with The Kimmel Center; *Constellations* (Marianne) with Quantum Theater Group. REGIONAL: *A Chorus Line* (Val), *The Drowsy Chaperone*, *Gypsy* with Connecticut Repertory Theater; *Constellations* (Marianne), *The Amish Project* (one woman show) with Emerald Theater Company; *Pippin* (Catherine), *Cherry's Patch* (Sandra), *Guys & Dolls*, *Beauty & the Beast* with Woodstock Playhouse; *Henry V*, *Shakespeare @ Longwood*, *Shakespeare + St. Valentine*, *Midsummer Mixtape* with DelShakes; *A Christmas Carol* with the McCarter Theater. UMiami BFA. Thanks to Alex, Paul, Maggie, Emily, and the whole QTG family. Thanks to Kev, Mom, and Dad always.

# CAST & CREATIVE BIOS

## TRANSFORMATION REP

### **HANNA GAFFNEY** | EMILIA/ MOPSA/ LADY; DOL COMMON

Hanna is an actor and teaching artist based in Philadelphia, PA. She was most recently heard in *Sweetwater* at the Philadelphia Women's Theatre Festival, and most recently seen in PAC's virtual production of *GOAT SONG* and Philadelphia Theatre Company's virtual production of *The Wolves*. Other favorite regional credits include Nancy in *Oliver!* (Barrymore Nominated), and Rachel Crabbe in *One Man Two Guvnors* at Quintessence, Maid Marion in *Little Red Riding Hood: A Musical Panto* at People's Light and The Lady of the Lake in *Spamalot* at Resident Theatre Co. She is a proud Graduate of the University of Wisconsin-Stevens Point BFA Acting Program.  
hannagaffney.com @hanna.gaffney

### **AMARI INGRAM** \* | POLIXENES; DRUGGER/ NEIGHBOR/ OFFICER

Amari is thrilled to be making his debut with Quintessence Theatre Group! Amari's notable credits include Dave Robinson in *Lombardi*, Omar Lansing in *On the Third Day*, Morocco and Duke of Venice in *The Merchant of Venice*, Demetrius in *A Midsummer Night's Dream*, Colehouse Walker, Jr., in *Ragtime*, Lord Goring in *An Ideal Husband*, and Marcos in *Kiss of the Spider Woman* (Regional). He also plays Jesse in the soon-to-be released film *Hit or Miss*. Amari is from Atlanta, Georgia. Follow him on Instagram! @amarijgram

### **TRAVOYE JOYNER** | FLORIZEL/ SECOND LORD; ANANIAS

Travoje is ecstatic to be back with Quintessence! You may have seen him in the 2020 (yikes) production of *Rachel*. Regional credits: *The Best Man* (Walnut St. Theatre), *74 Seconds... to Judgment* (Arden). He is a graduate of the Baltimore School for the Arts. Big love for you and all.

### **JOSEPH LANGHAM** \* | ANTIGONUS/ SHEPARD; SIR EPICURE MAMMON

Joseph is an award winning actor, a published playwright, and a prolific singer-songwriter. These will be his 6th and 7th roles cast at Quintessence and he couldn't be more pleased to be working with such dedicated and talented people. He currently lives in a Tiny Home in Central PA with his amazing wife, Ariana and his insufferably cute dog, Mortimer.

# CAST & CREATIVE BIOS

## TRANSFORMATION REP

### **JERED MCLENIGAN** \* | **AUTOLYCUS/ ARCHIDAMUS/ OFFICER**; **SUBTLE**

Jered is so happy to return to live theater and to Quintessence, where he was last seen as Professor Bhaer in *Little Women*, The Cowardly Lion in *The Wizard of Oz* and Stanley Stubbers in *One Man, Two Guvnors*. Jered is a founding member of the Hothouse Company at the Wilma Theater, where he was recently seen in *Minor Character: Six Translations of Uncle Vanya at the Same Time* and online in the critically-acclaimed *Heroes of the Fourth Turning*, which earned a Drama League nomination for Outstanding Digital Theater. Jered is a 3-time Barrymore Award recipient, and is beyond grateful to be with you in Mount Airy - thank you so much for your support! **PERFORMANCE UNDERWRITTEN IN PART BY MARION MILLER.**

### **HILLARY PARKER** \* | **HERMIONE/ TIME**; **SURLY**

Hillary has been seen in a number of QTG readings and is thrilled to be making her main stage debut. Select credits include *You For Me For You* with InterAct Theatre Co. (Barrymore Award, Supporting Actress), *God of Carnage* (Hangar Theatre), *Gypsy*, *A Midsummer Nights Dream* (Capital Repertory Theatre), *The Miracle Worker*, *Romeo and Juliet* (Media Theatre) *The Hypochondriac*, *She Loves Me* (Hope Rep), *The Winter's Tale*, *The Merchant of Venice* (Saratoga Shakespeare), *Our Town* w/ James Whitmore (Peterborough Players), *Macbeth*, *Love's Labour's Lost*, *Restoration Comedy* (Connecticut Rep) and *Into The Woods* (The Resident Theatre Co.). She has been seen in numerous concerts and readings with Philadelphia Artist Collective, 11th Hour Theatre Company, The Asian Arts Initiative and The Adirondack Theatre Festival. BFA: Syracuse MFA: UConn. [hillary-parker.com](http://hillary-parker.com)

**PERFORMANCE UNDERWRITTEN IN PART BY PATRICIA STRANAHAN & ED RHOADS.**

## Keep it Local Shop the Co-op

**300+**  
Local Vendors  
Supported



Ambler • Chestnut Hill • Mt. Airy  
Community-owned markets, open to everyone.  
[www.weaversway.coop](http://www.weaversway.coop)

# CAST & CREATIVE BIOS

## TRANSFORMATION REP

### **JOHN ZAK\*** | CAMILLO/ MARINER; FACE

John Zak is an actor and voice over artist currently based in Philadelphia, PA. John makes his debut with Quintessence and is proud to be invited to share in the magic of these two productions! Other theatre credits of note: Mr. Kraler *The Diary of Anne Frank* (People's Light & Theatre); Michael in *The Pillowman* (Luna Theatre)\*; *My Wonderful Day* (Wilma Theater)\*; *Amadeus* (Walnut Street Theatre); *Jihad Jones & the Kalashnikov Babes* (InterAct Theatre), *The Life of Galileo* (Wilma theater), *Red, White & Tuna* (Walnut Street Theatre), *The European Lesson*, *Jo Stromgren Kompani* (Philadelphia Live Arts/Norway tour), and *Caliban The Tempest*, (Philadelphia Shakespeare Theatre) – Barrymore Award; and numerous other Shakespeare plays.

\*Barrymore nomination. "Break a leg!" to cast and crew. All my love to Lesley & Charlie.

### **MICHAEL ZLABINGER\*** | LEONTES; TRIBULATION/ LOVEWIT

Michael was last seen at Quintessence in the title role of *Mary Shelley's Frankenstein*. Off-Broadway: *Desperate Writers* (Union Square Theatre), *The Subtle Body* (59E59), *Like Money in The Bank* (Theatre Row). International: European premiere of *The Goat, or Who is Sylvia?* (Vienna's English Theatre, dir. Pam MacKinnon). Regional: Iago in *Othello*, Romeo in *Romeo & Juliet* (NC Shakes); Torvald in *A Doll's House* (NC Stage); Sleuth (Fulton); *Little Shop of Horrors* (Dante Hall); world premiere of Lee Blessing's *A View of the Mountains* (NJ Rep); *Other Desert Cities* (Pioneer); *The Columnist* (Florida Studio Theatre); *Ah, Wilderness!* (Baltimore Centerstage); *Hamlet* (Shakespeare Theatre Company, dir. Alexander Burns); world premiere of *Splitting Infinity* (Geva); *Hamlet* (Long Wharf); *Handle With Care* (Florida Studio Theatre & Gulfshore Playhouse);. TV: "Evil," "Elementary," "Madam Secretary," "Allegiance," "Unforgettable," "Person of Interest," "Buffy the Vampire Slayer," "MTV's Now What?" (pilot). [www.michaelzlabinger.com](http://www.michaelzlabinger.com). PERFORMANCE UNDERWRITTEN IN PART BY JANET & JAMES AVERILL.

### **PAUL HEBRON\*** | DIRECTOR

Paul has worked as an actor, director and teacher in NY, at regional theaters, and with universities and colleges around the country, often focusing on the classics. At the Quintessence, he has performed in *Henry V*, *As You Like It*, *Richard II*, *The Importance Of Being Earnest*, *Julius Caesar*, and *Long Day's Journey Into Night*, among others. Broadway credits include *Born Yesterday* and *Uncle Vanya*, and Off Broadway, *The Merry Wives Of Windsor* and *The Taming Of The Shrew*. For more than sixteen years he was a resident company member and associate teaching artist at the Alabama Shakespeare Festival, performing in over 28 plays in Shakespeare's canon, from *Twelfth Night* and *Much Ado About Nothing*, to *Coriolanus*, *King Lear*, *Othello*, and *Macbeth*.

# CAST & CREATIVE BIOS

## TRANSFORMATION REP

### **ALEXANDER BURNS | DIRECTOR/ SOUND & SCENIC DESIGN; SCENIC DESIGN**

This is Alex's 42nd production at Q. REGIONAL: *Romeo & Juliet* (Trinity Shakespeare Festival), *Hamlet* (Shakespeare Theatre Company DC @ Carter Barron), *Henri Gabbler*, *Diabolique*, *The Maids* (Exigent Theatre). PHILADELPHIA: *Macbeth* (Arden Theatre). Alex was a Directing Fellow at the Shakespeare Theatre Company in Washington, DC. Training: Northwestern University, LCT Director's Lab, the Jack O'Brien Directors Lab.

### **ALEX CORDARO | FIGHT CHOREOGRAPHY**

Alex is a Philadelphia based Fight Director and Educator with over 30 years of training, practice, and experience creating stage violence. Selected LORT credits include The Wilma Theatre, The Arden Theatre Company, The McCarter Theatre Center, The Actors Theater of Louisville, and Philadelphia Theatre Company. Regional credits include The Opera Company of Philadelphia, The Pennsylvania Shakespeare Festival, The Philadelphia Shakespeare Festival, Three Rivers Shakespeare Festival, Lantern Theater Company, Theater Exile, Inis Nua Theater Company, Philadelphia Artists Collective, Quintessence Theater Group, Theatre Horizon, Forensic Files on TRU TV, and others. Alex's choreography has been sailing across Europe for the past ten years with twenty-five different casts in Royal Caribbean Cruise Line's productions of *Saturday Night Fever!* and *Columbus...The Musical!!* Alex has also directed numerous fights for Philadelphia area dance companies and regional colleges. Currently, Alex runs the Stage Combat Progression at the University of the Arts in Philadelphia, offering four semesters of training to the BFA and MFA cohorts. He has also served as Stage Combat Instructor at Arcadia University, Rowan University, Temple University, and The University of Delaware. Alex is a core instructor for the annual Philadelphia Stage Combat Workshop which recently celebrated its 20th year. Alex is a Fight Director, Certified Teacher, and Theatrical Firearms Instructor with the Society of American Fight Directors. He is a three-time Barrymore Award Nominee for Outstanding Movement/ Choreography and was featured on the Discovery Channel's "Project Discovery" series: Careers in the Arts; Fight Director.

### **CURTIS COYOTE | PUPPET MAKER**

Curtis has worked at the Seattle Rep. Theatre, the Intiman Theatre and the Group Theatre as a full time scenic artist for a total of 11 seasons. He has also worked on 12 major motion pictures and 5 television shows including *Invincible*, *Rocky Balboa*, *Annapolis*, and *The Village*.



# CAST & CREATIVE BIOS

## TRANSFORMATION REP

### **DAVID COPE** | ORIGINAL MUSIC

Dave Cope is a singer-songwriter and composer residing in Philadelphia. He has written and recorded music spanning a wide variety of genres including Rock, Pop, R&B, Folk and Classical. He assisted in composing music for the 2017 Fox Searchlight release *Patticake\$* and has licensed his music to many projects in film and television. He is the frontman and songwriter for Dave Cope and the Sass who released their debut album in 2019. The lead single from the album "If Your Mama Only Knew" garnered substantial airplay on independent radio and was one of the top 100 songs played on WXPN in Philadelphia for 2019. The album and subsequent releases have received accolades in *Shindig!* Magazine and made the best of lists in multiple publications including *Power Pop News*, *Powerpopaholic*, *I Don't Hear A Single* and *David Bash's* top 125 albums. Before working with the Sass, Cope worked with Andres Villamil, Demian Mason and Sarah Biemuller, in the new wave performance art group LeBon LeBon whose novelty song *All I Want Is Megan Fox For Christmas* has become a staple of the yuletide blue catalog. Recently, Cope has branched out into producing music for local Philadelphia artists, working with Hawk Tubley and the Ozymandians, Lonesome Crow, John Byrne (the John Byrne Band) and Chris Brooks (Rylan Brooks, Chris Brooks And The Love Hounds). He has been collaborating extensively with Quintessence Theatre Group since the troupe's founding, scoring such works for the company as *Diary Of A Madman*, *Alice's Adventures In Wonderland* and a musical version of *Hansel and Gretel*.

### **MAGGIE DAVIS**\* | PRODUCTION STAGE MANAGER

Maggie has served as resident stage manager and an associate producer at Quintessence since 2018, working on several productions and projects, both in person and virtual. Other stage and production management credits include: Four seasons with the Pennsylvania Shakespeare Festival; *Something Wicked This Way Comes* (Delaware Theatre Company); *Yours, Anne*, among other productions (Half Moon Theatre); Seven seasons with the Hudson Valley Shakespeare Festival; *Christmas Rappings* (Judson Memorial Church); Radio City Christmas Spectacular (Florida/Texas Tour); *Mike Birbiglia's My Girlfriend's Boyfriend*; *Tribes*; and *Hit the Wall* (Barrow Street Theatre); *Emotional Creature* (Signature Center); *Measure for Measure* (Fiasco/New Victory Theater). Peace.

# CAST & CREATIVE BIOS

## TRANSFORMATION REP

### **LIZ FILIOS\*** | ORIGINAL MUSIC

Liz Filios is a Philadelphia-based actor, musician, sound designer and teaching artist. Composition/Sound Design credits include: *The Little Princess* (Quintessence Theatre Group), *The Tempest* (Chicago Shakespeare Theater), *The Winter's Tale* (Folger Shakespeare Theatre), *D-Pad* (Theatre Exile), *An Iliad* (Lantern Theater), *The Ice Princess*, *Hamlet*, *Shakespeare In Love* (Pennsylvania Shakespeare Festival), *The Merchant Of Venice* (DelShakes) and *The Matchmaker* (People's Light & Theatre). Liz is a composer in residence at the Abington Friends School, and the Choir Director for Play On Philly, a non-profit dedicated to music education. She is also currently developing *Sweetwater*, a new musical inspired by the Women's Air Force Service Program, and *Twelfth Night O Lo Que Quieras*, a bilingual musical adaptation for Delaware Shakespeare's Community Tour. She holds a BFA in Musical Theatre from the University of Michigan.

### **KAYLEIGH GUMBRECHT** | WARDROBE SUPERVISOR

Kayleigh is a Philadelphia-based wardrobe, stitcher, and designer whose work style places a focus on sustainability and reviving historical technique. They spent the lockdowns building more than 1000 masks, caps, and gowns for local hospitals and civilian use. Quintessence: *Rachel*, *The Wizard of Oz*, *The Synge Festival*. UCPAC: *Into the Woods*, *Haunted Hamilton*, *The Pillowman*. Fearless Productions: *Romeo & Juliet*, *Narnia: The Musical*, *Hamlet*.

### **SUMMER LEE JACK** | COSTUME DESIGN

Summer Lee Jack is a freelance costume designer living and working in New York City. Summer has been designing costumes for over 15 years and has worked on over 125 productions of operas, musicals, plays, and films, garnering considerable critical praise for her work. Of Summer's production of *Into the Woods*, BroadwayWorld.Com stated "Summer Lee Jack's stunning costumes are a perfect balance of the illusory and the real world, bringing some edge to the story." The New York Times praised her costumes for *Complete Works of Shakespeare (Abridged)*, stating "Summer Lee Jack's costume design adds considerably to the show's cheery playfulness." This is her fifth production with QTG including past productions of *Prince and the Pauper*, *Awake and Sing!*, *The Playboy of the Western World* & *The Skin of Our Teeth*. Summer is a proud member of United Scenic Artists Local 829, and she is an active member in Wingspace Theatrical Design Collective Mentorship Program. Originally from Dallas, Texas, her undergraduate degree is in Scenography from Arizona State University, and she has an MFA in Design from the Yale School of Drama. [www.summerleejack.com](http://www.summerleejack.com).

# CAST & CREATIVE BIOS

## TRANSFORMATION REP

### **JANE CASANAVE** | COSTUME DESIGN

Jane has been a theatre artist in both Washington, D.C. and Philadelphia. Returning to Philly in 1974 Jane has worked as an educator, director and designer at the University of Pennsylvania, several independent schools and at People's Light and Theatre Company. In 2010 she was part of the original Quintessence design team for their first production. Jane Casanve has been an educator at Germantown Friends School for over 40 years.

### **ADRIENNE MAITLAND** | CHOREOGRAPHER

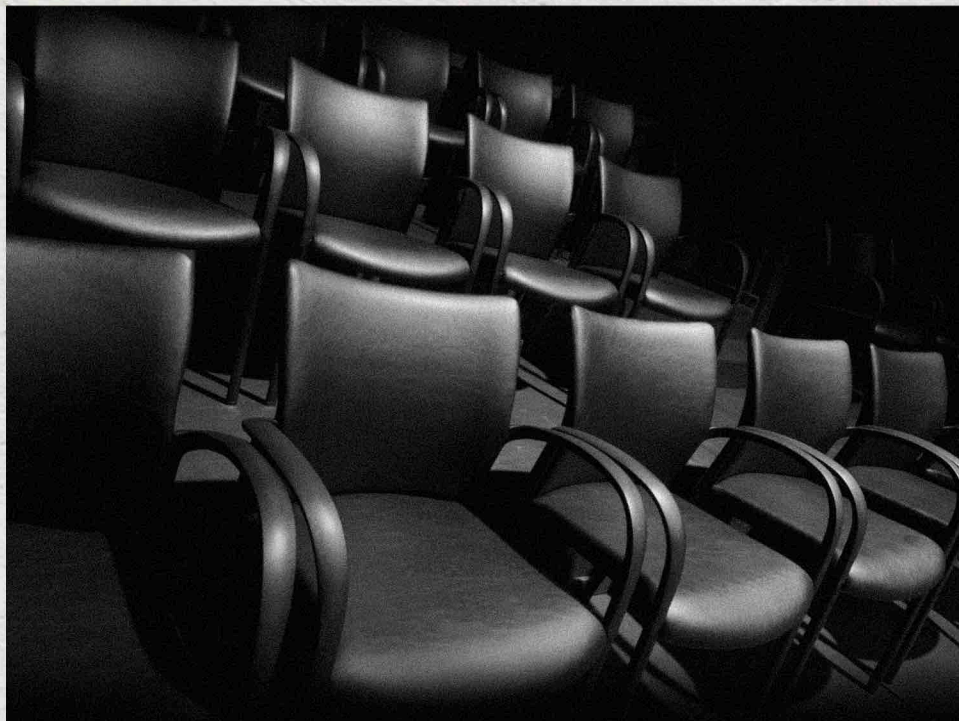
A graduate of Penn State BFA Musical Theatre program, she is thrilled to be returning to Quintessence this season. She previously choreographed *The Wizard of Oz* for 2019 season. Past favorite credits include: MAUI: *Guys and Dolls* (Director/Choreographer). NYC: *Gay Bride of Frankenstein*. NYMF '09; *A Funny... Forum* (Dir /Choreo), Seacoast Rep. Philadelphia: Quintessence; *Wizard of Oz* (Choreo), BCKSEET productions *The Wall LIVE in Concert* (Choreo-lead dancer); LaSalle University: *Drowsy Chaperone* (Choreo/Asst. To Dir.), Cumberland County College. *Beauty & Beast* (Choreo), Sandy Run Middle: *Mulan Jr.* MacGuffin Film & Theatre: *Fiery Furnace*, *13- The Musical*, *Urinetown!* *Pippin*, *Wicked*, *Annie Jr.* (Choreo) Regional: Historic IAO Theatre Maui, Hawaii, *Guys and Dolls* (Dir/Choreographer), *Cabaret* (Asst. Choreo, Dance Capt, Texas & Sally u/s); Seacoast Rep, NH: *A Funny... Forum* (Dir/Choreo), *Gay Bride... Frankenstein* (World Premiere- Asst. Director/Original Choreo) *Wizard of Oz* (Asst. Dir./Choreo/ Wicked Witch) *Oklahoma*, *Bat Boy*, *Urinetown*, *Footloose* (Asst. To Dir./Choreo); Prescott Park Arts Fest, NH; *Willy Wonka*, *Annie*, *Shrek* (Asst. Dir./Choreo) Players Ring, NH: *Gay Bride of Frankenstein* (Original workshop Choreo/Asst. Dir.), *Equus* (Choreo Stage Mvmt).

"This and every show is dedicated to my Mom, thank you for teaching me to DREAM and BELIEVE in it... ALWAYS!"

### **ELLEN MOORE** | LIGHTING DESIGN

Ellen is excited to be returning to Quintessence Theatre Group. Previous productions with Quintessence include *The Skin of our Teeth*, *King Lear*, *Hamlet*, *Mother Courage* and *Long Day's Journey into Night*.

# **RUMP HURT?**



**ERGONOMIC DESIGN  
53.5% RECYCLED MATERIAL  
COMFORT FOR 5 ACT DRAMAS  
STAIN RESISTANT (FOR COMEDIES)**

**\$500+ CHAIR DEDICATION  
\$2500+ ROW DEDICATION**

**INQUIRE AT BOX OFFICE**

# THANKYOU

Quintessence Theatre Group is grateful to the following individuals, foundations, government agencies, & non-profit organizations who have provided generous operating, programmatic, and/or capital support from August 1st, 2020, to March 15th, 2022.

## **FOUNDATION, GOVERNMENT, AND NON-PROFIT SUPPORT**

Actors' Equity Foundation  
Alpin W. Cameron Memorial  
Trust

The Andrew W. Mellon  
Foundation

The Charlesmead Foundation  
Dolfinger-McMahon  
Foundation

Drumcliff Foundation

E. Margaret Carson Trust

The Hartford Foundation for  
Public Giving

Johnson & Johnson Family of  
Companies Matching Gift  
Program

The Lida Foundation

Nararro Foundation

National Philanthropic Trust

Shubert Foundation

US Small Business  
Administration

Virginia Brown Martin Fund of  
the Philadelphia Foundation

William Penn Foundation

Wyncote Foundation

### **\$75,000+**

Patricia Stranahan &  
Edward Rhoads  
Faye & Daniel Ross

### **\$25,000 - \$74,999**

Anonymous  
Bethany Asplundh

### **\$25,000 - \$74,999 cont.**

Rodman Rosenberger  
Joan I. Coale  
Paula Kem  
Stephanie & Ted Wolf

### **\$10,000 - \$24,999**

Jim & Janet Averill  
David & Rhonda Cohen  
Grant Greapentrog  
William A. Loeb  
William & Shoshana Sicks  
Billy Wheelan

### **\$5000 - \$9999**

Janice Bogen  
Helen Mara Burns  
Sandra Cadwalader  
Stephen Heimann & Monika  
Hemmers-Heimann  
Richard & Elizabeth  
Mentzinger  
Marion Miller

### **\$1000 - \$4999**

Anonymous  
Ken & Brenda Beiser  
Mark & Linda Bernstein  
Peter & Marilou Buffum  
Diane & Patrick Close  
John & Fern Culhane  
Barbra Eaton & Edward  
Salners  
Nancy & Robert Elfant  
Michael Gillum & Andrew  
White  
Linda & David Glickstein

# THANK YOU

## **\$1000 - \$4999 cont.**

Noel Hanley  
Janai Haynes  
Heinsdorf Family  
Jim & Judith Johnston  
Eli Kay-Oliphant & Marina Squerciati  
Anne Silvers lee & Wynn Lee  
Sandra Leggieri  
Terry Ann Marek  
Michael McCleary & J. Scott O'Barr  
Carol Nitzberg  
Barbara Rice & Tina Phipps  
Maron Deering & Sandy Mayson  
Karen Scholnick  
JoAnn Seaver  
Robert & Karen Sharrar  
Bill & Cathy Sharrar  
Richard Snowden & Fred Holzerman  
John Williams  
Benny Young  
Peggy Zwerver & Tom Baker

## **\$500 - \$999**

Jan Albaum & Harry Cerino  
Robin C. Bauer  
Howard Bilofsky  
Gregory Coleman  
Carol Cook  
William Daly  
Mariliz Diccicco  
David Elesh  
David & Betty Fellner  
Marion V. Heacock  
Archibald Clinton Hewes  
Laura & Ben Huggett  
Drs. Jeffrey Jaeger & Nadja Peter  
Peter Lang  
Andre Robert Lee  
George McNeely  
Daniel Mines  
Laura Ward & David Newmann  
Dr. Janet Novak & Christopher Sarnowski  
David Llyod Olson & Jonah Richmond  
Steven J. Peitzman  
James Reilly  
Simon Richter & Tina Muller  
Sherry Schwartz  
Margaret Shapiro  
Victoria Sicks  
Jeannine B. Webber  
Loretta Witt  
Rebecca Zaslou

## **\$100 - \$499**

Carol Adams  
Sara M. Allen  
Joel & Lee Allen  
Anonymous (4)  
Michelle Anthony  
Carol R. Aronoff  
Joel & Lee Allen  
James Baffa & Hannah Wolff  
David Ballard  
Jane & Richard Baron  
Leah Batchis  
Gregory Batker

## **\$100 - \$499 cont.**

Robert & Sandy Clay Bauer  
Frances & Michael Baylson  
Jan Jee Bean  
Timothy Berger & Sarah Mooers  
Mark & Rebecca Bernstein  
Jeannie & Tim Bickhart  
Charlotte Biddle  
Robert Billman  
Ilene & Robert Blain  
Barbara Bloomfield & Richard Heiberger  
Wendy Blustein  
Susan Bockius  
Hazel Bowers  
Dan Kern & Nancy Boykin  
Margaret Boyle  
Corinne Brady  
Elise Bromberg  
Carol Brown  
Hillary Burdette  
Shelagh Byrne & Linda Johnson  
Carole Carmichael  
Louise & Rex Carpenter  
Dhyan Cassie  
David Cassie  
Carol Caswell  
Matthew Cathell  
Gail Cionci  
Terry Clark  
Joan L. Coale  
Milton Cohen  
Lynn Collins  
Deborah Cooper  
Dave Cope  
Carol Corson  
Marie-France Cyr  
Helen & Joseph D'Angelo  
Michael & Ann D'Antonio  
Patricia Rose & Marta Dabezies  
Janis Dardaris  
Emily Darigan  
Mr. & Mrs. Mike Devine  
Nina & David Diefenbach  
Carley Dillon  
Diana Donaldson  
John Dulik & Sandra Folzer  
Lucy Ann Dure  
Martha M. Durkin  
Neil Durkin  
Bill Ehrhart  
William Ewing  
Bonita Falkner  
Monica Ferrante  
Joanne & Ken Ford  
Nancy Ford-Gore  
Regina Forrence  
Marion Frank  
Janetlynn Garrabrant  
Jennifer Gellhorn  
Florence Gelo  
Sol Glassman, M.D.  
Paul Gontarek  
Henry & Anita Gratwick  
Frank & Phoebe Griswold  
Luke Halinski  
Colin & Pricie Hanna

# THANK YOU

## \$100 - \$499 cont.

Barbara Harris  
Ellen Hass  
Donna Hecker  
Megan Hess  
Jody Hill  
Natalie & Ralph Hirshorn  
Barbara Hodas  
Gloria Hoffman  
Robert Holum  
Ruth Hoover  
Kate Hovde & Ken Kulak  
Nancy & Andy Janus  
Thomas Johnson  
Ann Jones  
Vincent Kling  
Theodore Knight  
Aryeh Kosman & Deborah Roberts  
Ian Krantz  
Hillary Kruger  
Rachel Lawton  
Thomas Lee  
Dion Lerman  
Debbie & Nati Lerman  
Judd Levingston  
Christopher Lione & Thomas Leonard  
Drs. Barry & Debby Lurie  
Jack Malinowski & Deborah Frazer  
Dianne Manning & Glen Bergmann  
Joan A. Markoe  
Dodie Marshall  
Clifford Matukonis  
M. McDonald  
Susan McGovern  
Irene McHenry  
Michael McKeever  
William McNamara  
Joan Menocal  
Flo Messier  
Karen Migdail  
Florence Battis Mini  
Alexander Molot  
Bruce & Barbara Morgan  
Sheila Murnaghan & Hugh Gordon  
Mara Natkins & Jerry Fagliano  
Paul Nemeth  
Joe M. Norton  
Vickie Olson  
Richard Orodener  
Kate Oshea  
Margaret Otte  
Kim Pelkey  
David Picker  
Claire Pisapia  
Abby Pozefsky  
Allen Prebus  
Sabrina Profit  
Danielle Reed  
Jana & Louis Richman  
Ann Ricksecker  
Mark Rivinus  
Sara Robbins  
Christopher Roberts  
Laura Robinson  
Eric Rolin

## \$100 - \$499 cont.

Karen Rothschild  
Marjorie Russell  
Rickie Sanders  
Brandon Sargent  
Sue Sauerman  
Michael Schaedle  
Frederick T. Schaefer  
Vivian Schirn  
Js Schlieman  
James Schrotz  
Hideko Secrest  
Mark Stern & Susan Seifert  
Andrea Selitto  
Emily Seymour  
Jim Sicks & Katie Day  
Patricia Smail  
Elizabeth Snowdon  
Jennifer & Arthur Snyder  
Henry & Beth Sommer  
Elizabeth Squires  
George & Debbie Stern  
Julianne & James Stokes  
Anna Stokes  
Andrew Stone  
Susan Q. Stranahan  
Albert Them  
Linda R. Tokarz  
Deborah W. Ward  
Sandra Whipple  
Alan Windle  
Jean Woodley  
Hilary Zankel  
Joshua Zissman  
Michael Zuckerman

## SPECIAL THANKS

Kaki Burns  
Mara Burns  
Jane Casanave  
Dr. Stephen Gluckman  
Linda Hamilton  
Dr. Adam Lyons  
Howard McKelvey  
Germantown Friends School  
Michael McCleary  
Dale Mezzacappa  
Mara Burns  
Mara Natkins & Jerry Fagliano  
Peggy & Tom Zwerver  
Phillip Scott Peglow  
John G. Williams  
Rickie Sanders  
Patricia Stranahan  
Edward Rhoads  
Evan McElhiney  
Michael Depp-Hutchinson  
Bowen Diamond  
Emily Cross  
Jason Howard  
The Lantern Theater  
Walnut Street Theatre  
Wilma Theatre  
Jojo Glodek  
Susan Hart  
Michael Bogdonov  
Ellen Moore  
Daniel Miller  
Scott O'Barr

# THANK YOU

## CLASSICS FORWARD SOCIETY

**\$20,000+**

Joan I. Coale  
Daniel & Faye Ross  
Patricia Stranahan & Edward Rhoads  
Anonymous

**\$10,000 - \$19,999**

Bethany Asplundh  
H. Mara Burns  
William Loeb  
William & Shoshana Sicks

**\$5,000 - \$9,999**

Bank of America  
Janice Bogen  
Sandra Leggieri  
Dylan Lyons  
William Wheelan

**\$1,000 - \$4,999**

Diana & Stuart Donaldson  
Edward Salners & Barbra Eaton  
Peggy Zwerver & Tom Baker



For more information on joining  
the Classics Forward Society,  
contact Sam Sweet,

**[sam@QTGRep.org](mailto:sam@QTGRep.org), (215) 987- 4450 x108.**



# QTG STAFF & BOARD

## STAFF

**ALEXANDER BURNS**, ARTISTIC DIRECTOR  
**SAM SWEET**, EXECUTIVE DIRECTOR  
**LEE THOMAS CORTOPASSI**, CREATIVE MANAGER  
**HALEY FLUKE**, MARKETING & BOX OFFICE MANAGER  
**DANIEL CIBA**, EDUCATIONAL PROGRAMS MANAGER  
**TAYLOR KELLAR**, DEVELOPMENT SERVICES MANAGER  
**EMILY CROSS**, OFFICE MANAGER & EXECUTIVE ASSISTANT  
**MAGGIE DAVIS**, RESIDENT STAGE MANAGER  
**VICTORIA SICKS**, INTERIM DIRECTOR OF DEVELOPMENT  
**JENNA STELMOK**, GRANT WRITER  
**CARRIE GORN**, PUBLICIST  
**JANE CASANAVE**, RESIDENT COSTUME DESIGNER  
**TRANQUILLITAS LIVING LLC**, CLEANING SERVICES

## BOARD OF DIRECTORS

**PATRICIA STRANAHAN**, CHAIR  
**DANIEL ROSS**, VICE CHAIR  
**BILLY WHEELAN**, TREASURER  
**DYLAN J. LYONS**, SECRETARY  
**JANICE BOGEN**  
**ALEXANDER BURNS**  
**STEPHEN J. GLUCKMAN MD**  
**PAULA KEM**  
**JOHN WILLIAMS**  
**PEGGY ZWERVER**

## DIRECTORS EMERITI

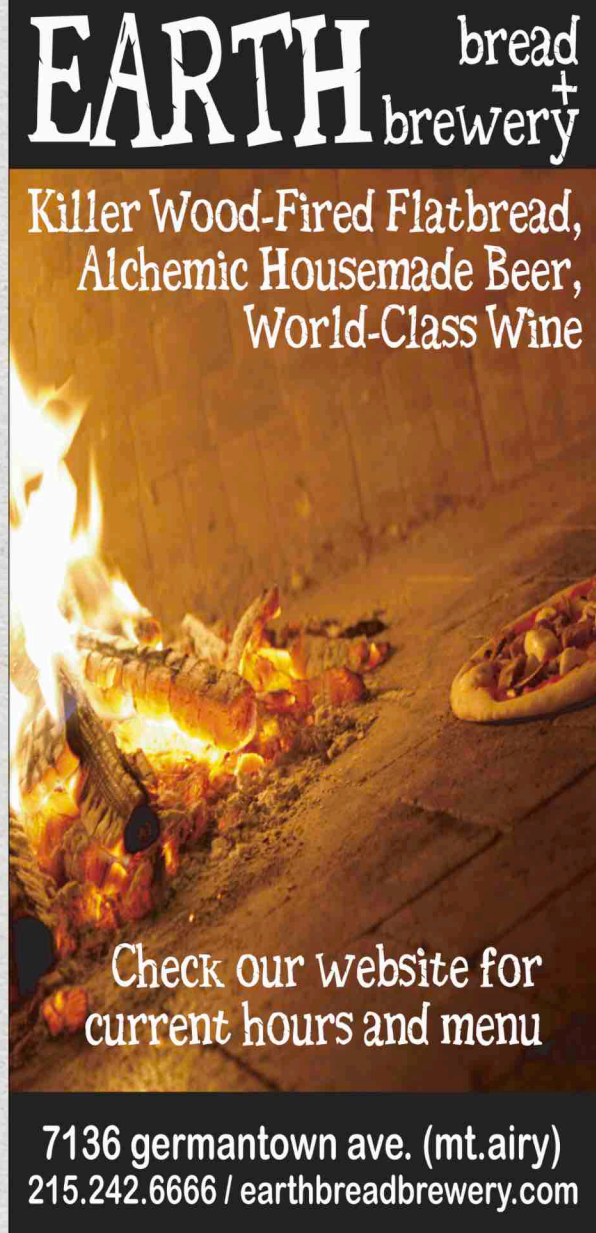
**JOAN I. COALE**  
**NICHOLAS CONSTAN**  
**LUCY BELL SELLERS**

## BOARD OF ADVISORS

**CAROLE CARMICHAEL**  
**LAWRENCE PRESSMAN**  
**WES SOMERVILLE**

## FRONT OF HOUSE STAFF

**James Haro David Irizarry Melise McKnight Danielle Woolis**



**EARTH** bread + brewery

Killer Wood-Fired Flatbread,  
Alchemic Housemade Beer,  
World-Class Wine

Check our website for  
current hours and menu

7136 germantown ave. (mt.airy)  
215.242.6666 / earthbreadbrewery.com

# High Point Cafe

is a Proud Sponsor of  
*Quintessence*  
*Theatre*

Season Subscribers come to either Cafe  
and get \$1.00 off ANY drink with your food purchase



coffee



bakery



community

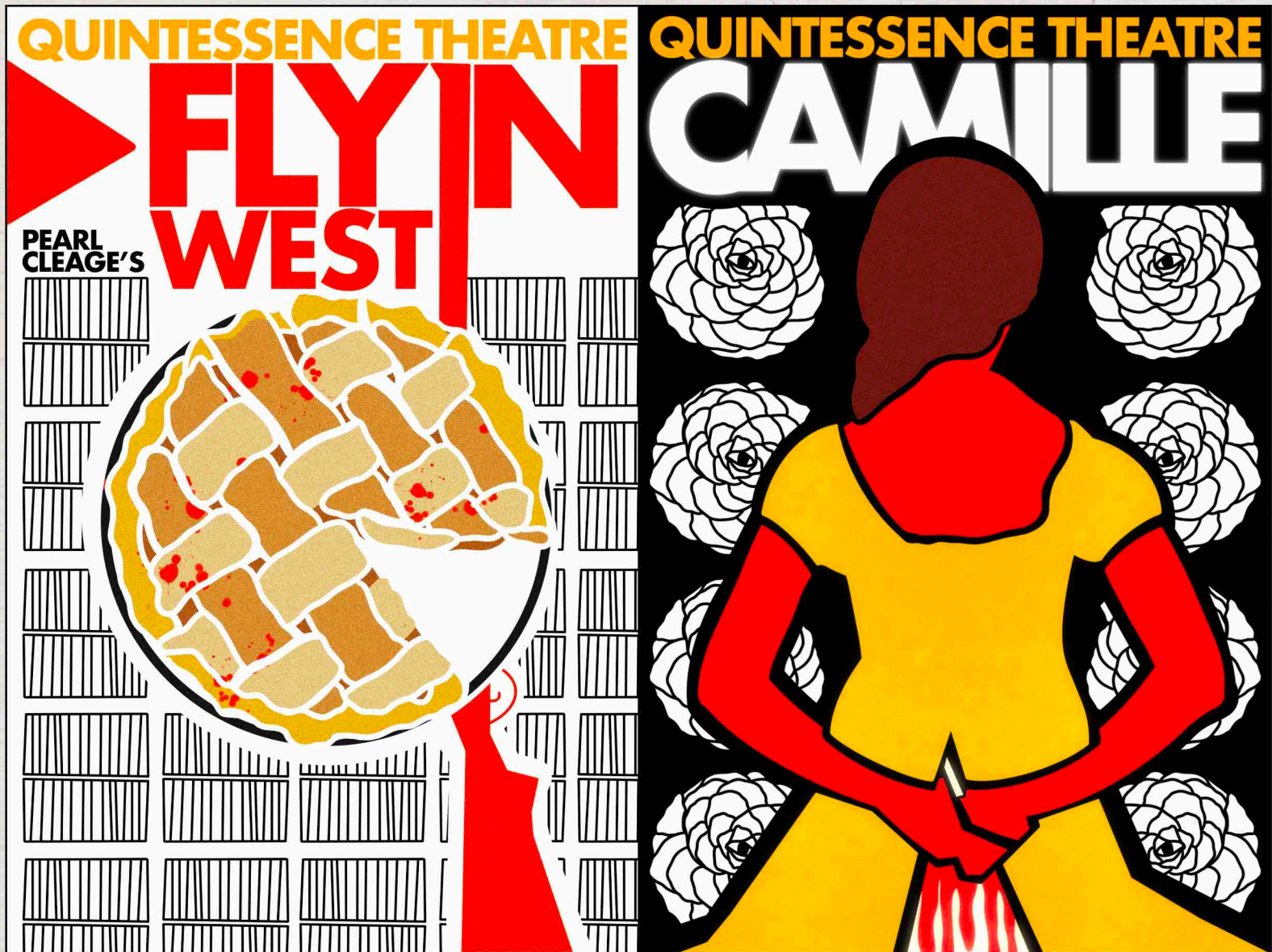
*Handmade Pastries  
& Desserts  
Local & Seasonal Ingredients*

*Exceptional Coffee  
Ethically Sourced  
Locally Roasted*

[www.highpointphilly.com](http://www.highpointphilly.com)

# SUMMER REPERTORY

MAY 24 - JUNE 26



Set in the all-Black Western settlement of Nicodemus, Kansas, **FLYIN' WEST** tells the story of four Black female pioneers who stake their claim in the face of sexism, violence, and the constant threat of white speculators breaking up the home they've made for themselves. Through harsh conditions and complicated relationships, the sisters stand in solidarity, declaring "our lives to be our own and no one else's." Pearl Cleage's American classic archives the history not taught in schools of the brave Black women who migrated West as part of the Exodus of 1879.

Among the glitz and glamor of 1800s Paris, Armand falls in love with a courtesan, even as the threat of deadly disease hangs over France like a ticking time bomb. Experience the passion, sacrifice, and raw emotion that inspired *La Traviata* and *Moulin Rouge*. Matilda Heron, the actress who renamed the title character for her 19th century American tour, translated this rarely produced version of *La Dame aux Camélias*. The quintessential test of true love in the face of an unforgiving society, Alexandre Dumas fils' **CAMILLE** lives on.



**QUINTESSENCE THEATRE** IS SUPPORTED IN PART  
BY THE **PENNSYLVANIA COUNCIL ON THE ARTS**, A STATE AGENCY  
FUNDED BY THE COMMONWEALTH OF PENNSYLVANIA.

QUINTESSENCE THEATRE GROUP IS PROUD TO BE SUPPORTED  
BY THE **PHILADELPHIA CULTURAL FUND**.



**pennsylvania**  
COUNCIL ON THE ARTS